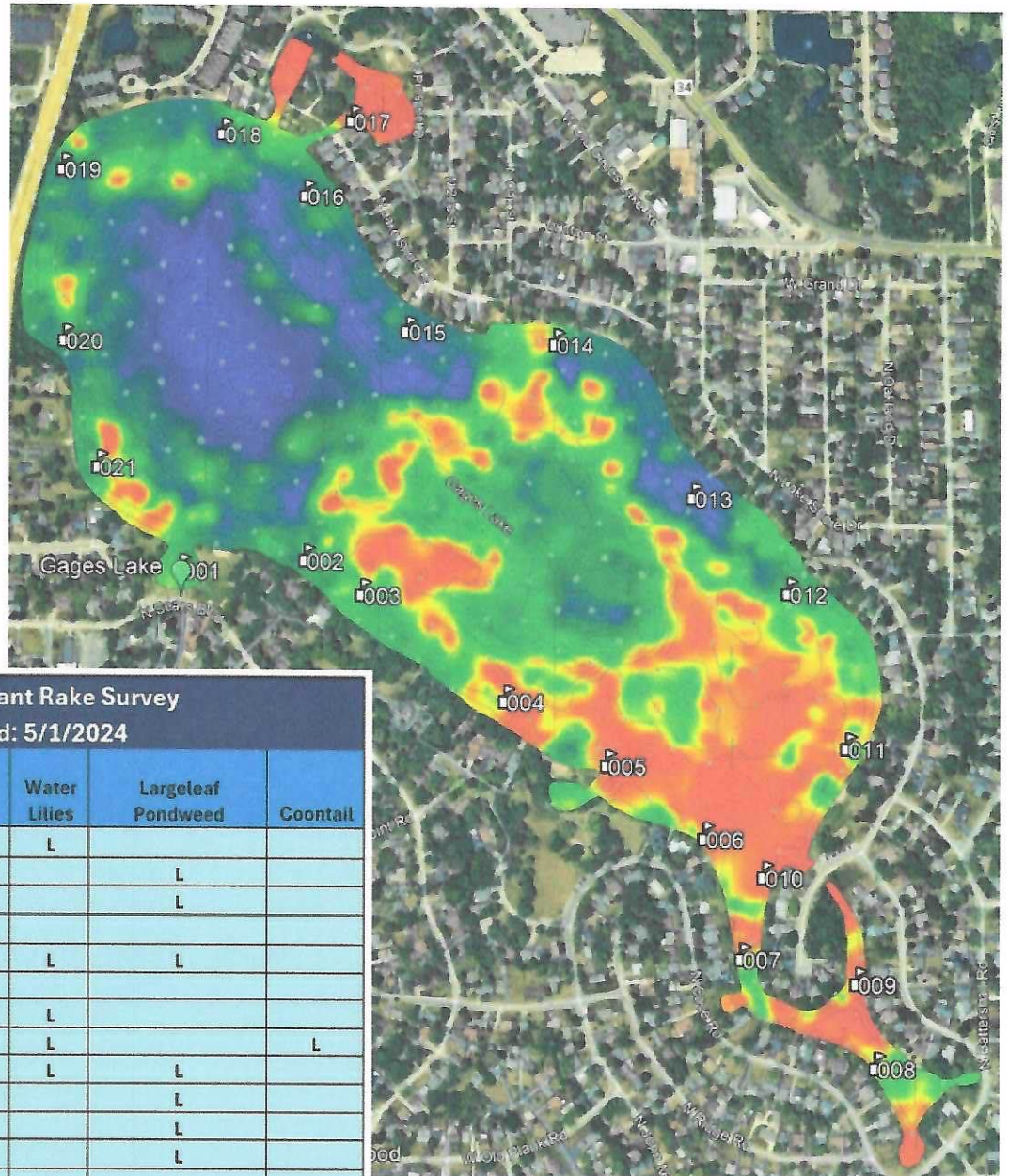


# 2024 EURASIAN BIOBASE MAP + PLANT INVENTORY

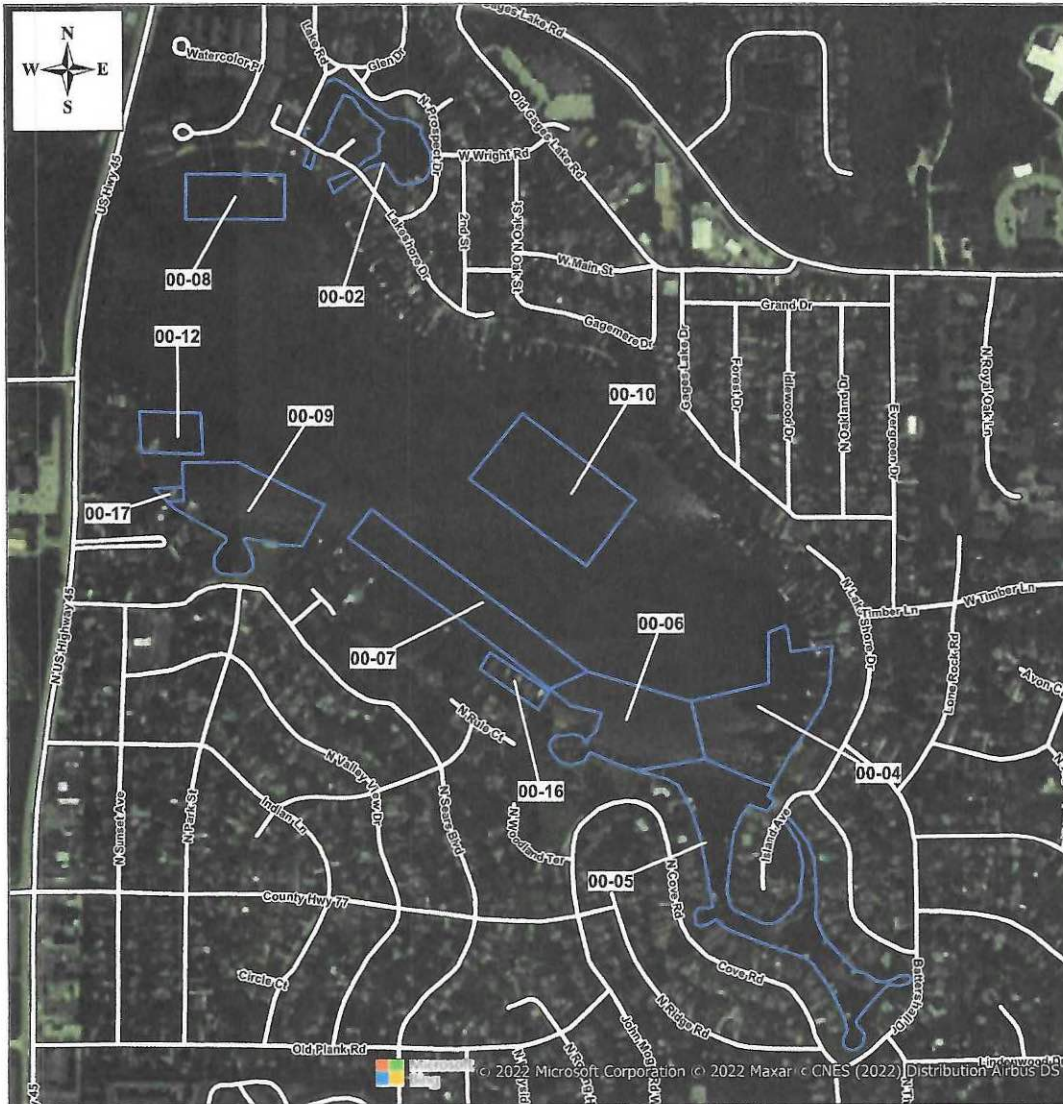
## Gages Lake, Lake County, Illinois



**Gages Lake Plant Rake Survey**  
Collected: 5/1/2024

Rake Sites	Eurasian Water Milfoil	Curly leaf Pondweed	Water Lilies	Largeleaf Pondweed	Coontail
1	M	L	L		
2				L	
3	L			L	
4	H				
5	H	L	L	L	
6	M	L			
7	H	L	L		
8	L	L	L		L
9	L	M	L	L	
10	M			L	
11	L			L	
12				L	
13					
14	L	L	L	L	
15					
16	L	L			
17	H	L	L	L	
18	L	L		L	
19	L			L	
20				L	
21	L				

L=Light  
M=Moderate  
H=Heavy



## GAGES LAKE

\$404 per acre

### 2021 TREATMENT ZONES

ACRES:  
 00-02 - 2.98 *3 acres*  
 00-04 - 6.46 *7.5 acres*  
 00-05 - 8.21  
 00-06 - 5.47 *6.5 acres*  
 00-07 - 5.32 *6.5 acres*  
 00-08 - 2.51  
 00-09 - 5.35  
 00-10 - 6.70 - *8.7 acres*  
 00-12 - 1.40 (SEAN HITZEMAN)  
 00-16 - 0.79 (MATT BRUECK)  
 00-17 - 0.18 (DAVE GEBOREK)

AREA EXCLUDING  
 00-12, 00-16, & 00-17:  
 43.00 ACRES

DATE: May 25, 2022

WARNING: This document is the property of Clarke Environmental Mosquito Mgmt., Inc. Any unauthorized use of this property will be prosecuted as a theft of labor, services, or property. (Chapter 38, §16-1 and §16-3 of the IL. REV. STATUTES)



24"

# **CARP FISHING DERBY**

**June 1st • 9AM - 12PM**

**Willow Point Park**





**GAGES LAKE  
CONSERVATION  
COMMITTEE**

## **FREE!**

Prizes for Each Age Group  
Fishing License Required  
Handicap Friendly!

**For More Info Visit: [Wildwoodparkdistrict.com](http://Wildwoodparkdistrict.com)  
or Call: 847-223-7275**

18"

Front

**CARP FISHING DERBY**

**June 1st • 9AM - 12PM**

**Willow Point Park**





**GAGES LAKE  
CONSERVATION  
COMMITTEE**

## **FREE!**

Prizes for Each Age Group  
Fishing License Required  
Handicap Friendly!

**For More Info Visit: [Wildwoodparkdistrict.com](http://Wildwoodparkdistrict.com)  
or Call: 847-223-7275**

Back

**CARP FISHING DERBY**

**June 1st • 9AM - 12PM**

**Willow Point Park**





**GAGES LAKE  
CONSERVATION  
COMMITTEE**

## **FREE!**

Prizes for Each Age Group  
Fishing License Required  
Handicap Friendly!

**For More Info Visit: [Wildwoodparkdistrict.com](http://Wildwoodparkdistrict.com)  
or Call: 847-223-7275**

24" X 18"

4mm Coro

Double-sided print

Ground stakes included

**Grayslake**  
**Signarama**  
The way to grow your business.  
888 E. Belvidere Rd. #408  
Grayslake, IL 60030  
**847-543-4870**  
[www.Signarama-Grayslake.com](http://www.Signarama-Grayslake.com)